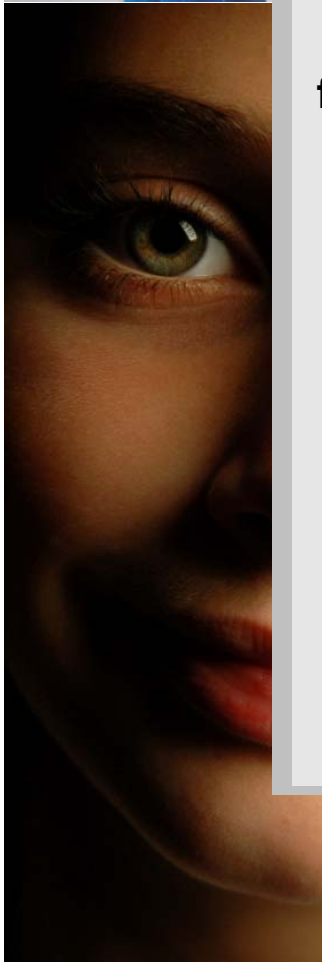
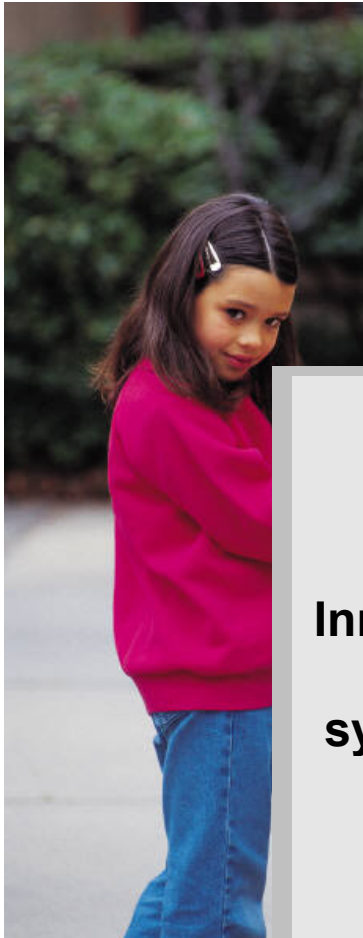


**The Scottish Institute  
of Human Relations**



**RESPONDING TO  
SOCIETY'S NEW  
CHALLENGES**  
Innovative applications of  
psychodynamic and  
systemic perspectives in  
Social Care  
Education  
and Health

A conference  
for those working in the care  
sectors

**Edinburgh  
6 and 7 May 2011**

**Jill Savege Scharff  
Bill Whyte  
Graham Monteith  
Alan Sinclair  
Alex Wallace**



**SIHR**   
40 Years of Promoting Mental Health



40 Years of Promoting Mental Health

# **RESPONDING TO SOCIETY'S NEW CHALLENGES**

## **Edinburgh - 6 & 7 May 2011**

**In 2011 the Scottish Institute of Human Relations reaches its 40<sup>th</sup> anniversary and this Conference is designed to celebrate our achievements to date and to inform planning for the next decade.**

**This Conference is for those managing and delivering services in health, social care, and education and at members of SIHR.**

The SIHR has always aimed to apply psychodynamic and systemic ideas to social as well as therapeutic settings. In the last five years there has been an increasing demand for its educational input from a wide range of organisations as managers recognise that when workers are enabled to look below the surface of what is happening with individuals, families and organisations it helps them deliver services more effectively. This capacity also mitigates the stress of working with complex and demanding human problems in complex and demanding environments.

The Conference aims to illustrate the practical application of these frameworks to health, social care and education through dialogue with speakers who have expertise in these fields. In addition a series of parallel sessions will describe and discuss particular aspects of the SIHR's work and their new directions. Application groups will offer participants an opportunity to reflect upon the presentations, make connections with other services, and consider what might be applied in their own settings.

It is hoped that participants will go away from the Conference with a clearer picture of the learning and training opportunities which SIHR has to offer. SIHR will in turn be able to tailor its many areas of work so that it can continue to contribute significantly in meeting the range of personal and social needs in our turbulent society.

## Speakers

**Jill Savege Scharff** is a psychoanalyst working with children and adults, a couple and family therapist, and a community psychiatrist.

After medical school at the University of Aberdeen, Jill trained in psychiatry at the Ross Clinic, Aberdeen; Dingleton Hospital, Melrose; and the Royal Edinburgh Hospital, where she trained with John D. Sutherland in community psychiatry and psychotherapy, while he was setting up the Scottish Institute of Human Relations. She did her child and adolescent training at the Tavistock Clinic, London, then the Children's National Medical Center, Washington DC, and completed her psychoanalytic training at the Washington Psychoanalytic Institute.

Author, editor, and co-author of many books on individual, couple, and family therapy, using the theories of the Scottish psychoanalyst, Fairbairn, and those developed by Jock Sutherland. Jill was co founder of the International Psychotherapy Institute and Chair of the International Institute of Psychoanalytic Training, both in Chevy Chase, Maryland USA.

**Bill Whyte** is Professor of Social Work Studies in Criminal and Youth Justice at the University of Edinburgh and Director of the Criminal Justice Social Work Development Centre for Scotland, University of Edinburgh.

Bill teaches on youth justice and criminal justice social work, on policy and law, and on effectiveness research for undergraduate, post qualifying and post graduate programmes.

Bill has worked as a social work manager and field social worker in the Lothians area, as a residential care worker in a (former List D) residential school, and as an independent local authority chair of child protection. He provides advice and consultancy to managers and workers in criminal justice social work, youth social work and to other related professionals across Scotland.

**Graham Monteith**, is the CAMHS Nurse Advisor for the Scottish Government; a post which he took up in July 2010. He is a graduate of Edinburgh University and qualified as a mental health nurse in 1986. He subsequently worked in numerous posts and settings as a nurse therapist and service manager in CAMHS within the NHS and during this period obtained two degrees from the Open University; an honours degree in Psychology and a Masters of Public Administration.

He gained a grounding in group and individual psychodynamic approaches from working within the Young People's Unit, Edinburgh in the late 1980s and went on from this to complete the two year SIHR Human Relations and Counselling course.

Graham has a simple belief that the formula for finding service delivery models which work well for patients in mental health is to create multi-disciplinary teams and then ensure that they work well by creating a culture of actively valuing diversity and the unique contribution of all disciplines involved.

**Alan Sinclair CBE** is a Fellow of the Centre for Confidence and Wellbeing. It recently published a compelling provocation by Alan ("0-5: How small children make a big difference").

For five years he was at a national level as the Senior Director for Skills and Learning at Scottish Enterprise. Prior to this he set up Heatwise which trained long-term unemployed to insulate houses and which grew rapidly in scale and reputation. Out of this came the Wise Group and as the Chief Executive he was responsible for its growth into a range of services and its pioneering work in getting long term unemployed people into jobs with regular employers.

Alan has had and continues to have a range of non-executive directorships and advisory roles.

**Alex Wallace** is Headteacher at James Gillespie's High School. His teaching career has included Balwearie High School in Kirkcaldy and Craigmoynton Community High School in Edinburgh, where he worked with SHADA, a support agency for heroin abusers, both as part of the management team and as a counsellor. He was seconded as Development Officer for Student Centred Learning when he worked with over 50 schools in Scotland and England. Another secondment, this time from James Gillespie's, saw him writing the Methodology paper for the Higher Still Development Project.

For the past eight years he has led a programme in South Africa to support a township school, and is now developing further links with other organisations for children and young people. He has extended the project to include Scottish sixth formers, and has just returned from taking 96 sixth formers to South Africa.

# PROGRAMME

Friday 6 May  
**Health and Social Care**

8.45 *Registration and Coffee/Tea*

9.45 **Jill Savege Scharff**  
Inner and Outer Worlds: Then and Now:  
the practical application of psychodynamic theories

10.45 *Coffee/Tea*

11.15 **Professor Bill Whyte**  
The role of family in working with young people in trouble.

12.15 *Lunch*

1.30 Parallel sessions

2.30 *Coffee/Tea*

2.45 **Graham Monteith**  
Human Relations, Public Policy and the Post Bureaucratic  
Organisation: reflections from a child and adolescent mental health  
perspective

3.35 Applications Groups

4.45 Plenary discussion

**CONFERENCE DINNER**

<b>PROGRAMME</b>	
Saturday 7 May <b>Education and Social Policy</b>	
9.30	<i>Registration and Coffee/Tea</i>
10.00	<b>Alan Sinclair</b> Investing in early years and parenting in Scotland, Holland and Finland
11.00	<i>Coffee/Tea</i>
11.30	<b>Alex Wallace</b> Holding on to Values in Turbulent Times
12.30	Closing remarks
12.45	<i>Lunch</i>

## **PARALLEL SESSIONS on Friday 6 May will include:**

- **Working with adolescents**
- **Working with couples**
- **Working with older people**
- **Organisational dynamics**
- **Working with faith groups**
- **Psychodynamic counselling**

Further information will be sent to participants along with the opportunity to sign up.

## 40<sup>th</sup> Anniversary Celebration Dinner



A celebratory glass of sparkling wine will welcome you to the atmospheric St Leonard's Hall, a 19th century mansion-house located at Pollock Halls, Edinburgh.

The traditional St Trinnean's Room, the inspiration for the school featured in the St Trinians films, will provide the setting for a three course dinner with wine, followed by coffee and petits fours.

**The after-dinner speaker is writer and broadcaster Richard Holloway.**

Richard was Bishop of Edinburgh and Primus (Archbishop) of the Scottish Episcopal Church till he stood down in 2000. He was a member of the Broadcasting Standards Commission from 2000-2003. He became Chairman of the Scottish Arts Council in 2005 and was appointed Chairman of the Joint Board of the Scottish Arts Council and Scottish Screen in December 2006. He is Founder and Chair of Sistema Scotland, the charity that seeks to change the lives of children through music.

A frequent broadcaster, he has presented a number of television series, including *Holloway's Road*, *The Sword and the Cross* and *Art and Soul*. Currently he presents a programme for BBC Radio Scotland called *Sunday Morning with Richard Holloway*. His latest book, *Between the Monster and the Saint: Reflections on the Human Condition*, was published by Canongate in August 2008.

## About SIHR

SIHR aims to facilitate the growth of individuals in their sense of themselves, their relationships, their workplaces, and cultural environments through the application of psychoanalytic, psychodynamic, and systemic ideas. It also works to promote healthy relationships in the family and in organisations

For the past 100 years psychoanalytic, psychodynamic and systemic thinking has given us some profound understandings of people and how they relate to each other. SIHR aims to make this body of knowledge available to all professions through postgraduate programmes and services, and encourages its application across the community.

Founded as an education trust in 1971, The Scottish Institute of Human Relations (SIHR) is a national resource that provides educational programmes and services. A national charity, it has premises in Edinburgh and Glasgow, with a wide network of practitioners and members.

Our courses and services translate psychoanalytic, psychodynamic, and systemic ideas into practical tools for professionals in the health service, voluntary and faith organisations, and education and social services.

### **For more information contact:**

Scottish Institute of Human Relations  
172 Leith Walk  
Edinburgh  
EH6 5EA.

t: 0131 454 3240  
f: 0131 454 3241  
[info@sihr.org.uk](mailto:info@sihr.org.uk)  
[www.suhr.org.uk](http://www.suhr.org.uk)

## Conference fees

6 & 7 May	£115
6 May only	£85
7 May only	£45
Conference Dinner	£45

**To book your place complete the form opposite and send to:**

Scottish Institute of Human Relations  
172 Leith Walk  
Edinburgh  
EH6 5EA.

t: 0131 454 3240

f: 0131 454 3241

e: [conference@sihr.org.uk](mailto:conference@sihr.org.uk)

## Booking form

### Responding to Society's New Challenges

6 & 7 May 2011 Napier Craiglockhart, Edinburgh

Please complete this form (photocopying it as required) and fax it to 0131 454 3241, or return it the address below. You should complete this form in BLOCK CAPITALS and use one form per person. You will receive a confirmation letter for your booking on receipt of payment.

SIHR, 172 Leith Walk, Edinburgh EH6 5EA. Fax 0131 454 3241

6 & 7 May	£115	<input type="checkbox"/>	7 May only	£45	<input type="checkbox"/>
6 May only	£85	<input type="checkbox"/>	Conference dinner	£45	<input type="checkbox"/>

**Title:**                      **Forename**  
(Mr/Mrs/Ms/Miss/Dr/Prof)

**Surname:**

**Job Title:**

**Organisation:**

**Address:**

**Postcode:**

**Tel:**

**Fax:**

**Email:**

**Please indicate:**

- I require wheelchair access/have mobility difficulties (please specify)
- I have special dietary requirements (please specify)
- I have other special needs (please specify)

**Payment Details**

Please either send a cheque, or if you require your organisation to be invoiced, a purchase order. Please note we will be unable to confirm your place if payment has not been received.

- I enclose a cheque for £ \_\_\_\_\_ made payable to 'Scottish Institute of Human Relations'
- Purchase order number \_\_\_\_\_

Cancellations: These must be made in writing prior to <b>29 April 2011</b> and will incur an administration charge of £10. We regret that no refunds can be made after that date unless the place is accepted by someone on the waiting list.
---

I do not want to receive information about any other SIHR courses, trainings, events, or services.



**Founded as an education trust in 1971, The Scottish Institute of Human Relations (SIHR) is a national resource that provides educational programmes and services. A national charity, it has**

**premises in Edinburgh and Glasgow, with a wide network of practitioners and members.**

### *Why choose SIHR?*

Understanding human relationships is central to emotional health and well-being, but sustaining and applying that understanding in the work of promoting mental health or social well-being is very demanding. SIHR, in its role as an educational charity, develops and delivers courses and services for people who respond to such demands in their professional lives.

Our courses and services translate psychoanalytic, psychodynamic and systemic ideas into practical tools for professionals in the health service, voluntary and faith organisations, and education and social services.

<p>172 Leith Walk Edinburgh EH6 5EA</p> <p>Tel: 0131 454 3240 Fax 0131 454 3241 edinburgh@sihr.org.uk</p>	<p>5 La Belle Place Glasgow G3 7LH</p> <p>0141 332 0011 0141 332 3999 glasgow@sihr.org.uk</p>
---	---

[www.sihr.org.uk](http://www.sihr.org.uk)

SIHR aims to ensure that no-one receives less favourable treatment on the grounds of gender, parental status, ethnic origin, colour, nationality, social class, disability, sexual orientation, religious belief or age. This information is available in other formats.

The Scottish Institute of Human Relations Ltd is registered in Scotland as a company limited by guarantee. Registered in Scotland: No 56781. Registered charity no SC013051 Registered office: 172 Leith Walk, Edinburgh, EH6 5EA.