

# SIHR

## **An Introduction to Psychoanalysis in Contemporary Society**



**A series of twelve topical seminars given by  
psychoanalytical psychotherapists and psychoanalysts  
of the Scottish Institute of Human Relations**

12 September - 5 December 2007  
Edinburgh 6.15pm - 8.15pm

# SIHR

**The Scottish Institute of Human Relations**

- *understanding people* -



# An Introduction to Psychoanalysis in Contemporary Society

## Overview

This twelve week course provides an introduction to psychoanalysis from its classical beginnings in the late nineteenth century to contemporary theory and practice.

The first six seminars explore historical progressions, aspects of human development and some important concepts in the practice of psychoanalysis and psychotherapy. Seminars seven to eleven examine the links between art, philosophy and neuroscience and psychoanalysis and the applications of theory to mental health and organisational life. The series concludes with an extended seminar which encapsulates much of the learning from earlier seminars in considering cinema and psychoanalysis.

## Structure

Each seminar takes the form of a presentation given by members of the Scottish Institute of Human Relations followed by discussion. An informal, participative atmosphere is encouraged and reading will be circulated before each seminar. Participants should allow up to two hours weekly for this pre-reading to gain maximum benefit from the course. Continuity will be provided by the Course Convenor's attendance at all seminars.

## Membership

There are no entry requirements other than an interest in the subject and seminars will be tailored, as far as possible, to the needs of participants. We hope the course will be of interest to **a range of lay and professional people** keen to learn about psychoanalysis today and its impact upon the individual and society. It provides a useful and informative link to other SIHR services, courses and trainings.

**It will be of particular interest to those in education, health and social work services who may be considering additional training in psychodynamic counselling, child and adolescent or adult psychoanalytical psychotherapy.**

For psychiatrists this course is eligible for CPD points (Royal College of Psychiatry).

Whether your interest is well developed or just beginning the Scottish Institute of Human Relations invites you to join us in a discourse on psychoanalysis in contemporary society – Jill Prentice, Course Convenor.

## Course Outline

### Part 1



12 September	What is Psychoanalysis? A cultural and historical perspective
19 September	Psychoanalysis today: misreadings, controversy and the analytic solitude
26 September	Developing a sense of self – the internal world
3 October	Defence mechanisms and their uses
10 October	Transference – then and now

17 October - break

### Part 2



24 October	Dreams and symbolism
31 October	Art, imagination and psychoanalysis
7 November	Philosophy and psychoanalysis
14 November	Attachment, neuro-science and psychoanalysis – new developments
21 November	Mental ill health and psychoanalysis
28 November	Understanding organisations and psychoanalysis
5 December**	Cinema and psychoanalysis, and conclusion

\*\* Seminar will be extended to 9pm to allow for film event

## Dates, times and venue

Wednesdays from 12 September to 5 December 2007 (with a break on 17 October), from 6.15-8.15pm, at SIHR, 172 Leith Walk, Edinburgh EH6 5EA.

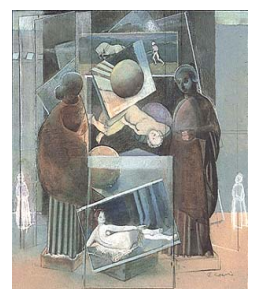
## Cost

The series costs £300.00 to include refreshments, extended seminar, reading material and Certificate of Completion.

Cheques should be made payable to 'Scottish Institute of Human Relations'. In the event of cancellation prior to the start date a £50 administration charge will be levied.

## Registration

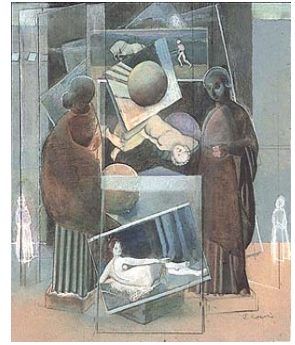
Please complete and return the attached registration form with your course fee payment.





**The Scottish Institute of Human Relations**

- *understanding people* -



Founded as an education trust in 1971, The Scottish Institute of Human Relations (SIHR) is a national resource that provides educational programmes and services. A national charity, it has premises in Edinburgh and Glasgow, with a wide network of practitioners and members.

Why choose SIHR?

Understanding human relationships is central to emotional health and well-being, but sustaining and applying that understanding in the work of promoting mental health or social well-being is very demanding. SIHR, in its role as an educational charity, develops and delivers courses and services for people who respond to such demands in their professional lives.

Our courses and services translate psychoanalytic, psychodynamic and systemic ideas into practical tools for professionals in the health service, voluntary and faith organisations, and education and social services.

### **The Scottish Institute of Human Relations**

172 Leith Walk  
Edinburgh  
EH6 5EA

Tel: 0131 454 3240  
Fax 0131 454 3241  
[edinburgh@sihr.org.uk](mailto:edinburgh@sihr.org.uk)

5 La Belle Place  
Glasgow  
G3 7LH

0141 332 0011  
0141 332 3999  
[glasgow@sihr.org.uk](mailto:glasgow@sihr.org.uk)

[www.sihr.org.uk](http://www.sihr.org.uk)

SIHR aims to ensure that no-one receives less favourable treatment on the grounds of gender, parental status, ethnic origin, colour, nationality, social class, disability, sexual orientation, religious belief or age. This information is available in other formats.